

STRADE BIANCHE BIKE TOUR

THE FAMED WHITE ROADS OF TUSCANY

These white, dusted roads are home to one of pro racing's biggest dates, with steep climbs and full-blown attacks at every bend. Experiencing it all on our Strade Bianche bike tour is truly something special. In addition to live race action, Tuscany's rolling vistas and fine wines make this a must-see destination. Try your hand at the challenging "Terre di Siena" Gran Fondo with full support from our world-class guides. Then on race day, watch the dust-covered pro riders finish their 125-mile campaign from the comfort of the Trek Travel exclusive viewing area under Siena's tall spires.

[Book your trip with confidence »](#)



From
Prices Coming Soon

Rider Type
Active / Avid

Hotel Style
Explorer

Duration
5 days | 4 nights

Start | End
Florence, Italy

Dates
Dates Coming Soon

TRIP WOWS

Challenge yourself on the Strade Bianche course with the support of your Trek Travel guides

Enjoy a live race viewing and feel the excitement near the finish of the Strade Bianche

Ride the famed L'Eroica Course, known best for its vintage cycling race and beautiful views

Experience the serenity of the Tuscan countryside and savor the flavors of Chianti Classico and local wines



DAILY ITINERARY

2021

Day

1

TODAY'S RIDE:

Siena to Pievescola loop

Approximately 32 miles with 3,400 feet of climbing

DESCRIPTION:

Your Trek Travel guides will meet you at Hotel Albani in Florence at 11:00 AM on the first day of your Strade Bianche bike tour. A one-hour shuttle will bring you to Hotel Athena in the beautiful town of Siena, your new home for the next four nights. After a light lunch, your guides will discuss bike safety and specific cycling tips for riding in Tuscany before familiarizing you with your Trek Domane Disc and ensuring a comfortable fit. Then it's time to take to the open road and warm up your legs as you spin through rolling woodlands and enjoy your first expansive Tuscan vistas. Tonight, we'll enjoy a social hour and dinner overlooking the picturesque valleys below and toast to the exciting days ahead.

HOTEL:

Hotel Athena

INCLUDED MEALS:

Lunch | Social Hour | Dinner

[VIEW TRAVEL AND LOGISTICS DETAILS »](#)

Day

2

TODAY'S RIDE:

L'Eroica Gaiole and Brolio Loop

Approximately 49 miles with 4,900 feet of climbing

SHORT OPTION:

L'Eroica Gaiole Loop

Approximately 45 miles with 4,200 feet of climbing

AVID OPTION:

L'Eroica via Montegrossi Avid Loop

Approximately 52 miles with 5,300 feet of climbing

DESCRIPTION:

"Strade bianche" is Italian for "white roads," and today we'll test our wheels on these famed routes for the first time. The name comes from the color of the dry limestone gravel that lifts into a fine white dust that lingers along the race course. We'll ride on the traditional L'Eroica course, which starts in the town of Gaiole and covers some of the most beautiful roads in the area of Chianti, winding among historic vineyards leading to the cypress-lined entrance of Castello di Brolio. You'll feel like a pro today as our guides support you in a battle against the same steep climbs that challenge the world's best.

HOTEL:

Hotel Athena

INCLUDED MEALS:

Breakfast | Lunch | Dinner

Day

TODAY'S RIDE:

Ride to the race course
Approximately 20 miles with 1,500 feet of climbing

TODAY'S ACTIVITY:

Live Race Viewing at the finish of the UCI "Le Strade Bianche"

3

DESCRIPTION:

Today you will live the race like a true Italian cycling fan. The 122-mile Strade Bianche race begins and ends in Siena, with a grand finish at Piazza del Campo, with 28 miles of white gravel roads along the route. We'll start our morning on bikes and get to the first gravel action, where we'll wait for the women's race to pass by and then move on to see the men's peloton on another gravel section. After the on-course viewing, we'll ride back toward Siena, where we'll enjoy lunch, soak up the race atmosphere, and watch coverage of the last sections on TV at our exclusive Trek Travel viewing spot. Then, it's time to watch the finish unfold in the center of Siena at Piazza del Campo. After an exciting day of race viewing, this beautiful town is yours to discover and enjoy dinner at your leisure.

HOTEL:

Hotel Athena

INCLUDED MEALS:

Breakfast | Lunch

Day

TODAY'S RIDE:

Strade Bianche Gran Fondo
Approximately 54 miles with 4,300 feet of climbing

AVID OPTION:

Strade Bianche Gran Fondo
Approximately 87 miles with 6,700 feet of climbing

4

DESCRIPTION:

Did all of that live race action give you inspiration to test your own legs? Today is your chance to tackle this Tuscan classic at the Terre di Siena Gran Fondo, a dusty challenge you can choose to ride for time or at your own pace. We'll begin in the center of Siena for the start of the Gran Fondo, where you'll pin on your number for a true Italian cycling adventure. The route of the Gran Fondo is the same as the Women's Elite route. a twisty and undulating course, with no long climbs but with punchy hills, most significantly on the unpaved parts. There are roughly 20 miles of gravel roads on the Gran Fondo course and around 12 miles for the Medio Fondo. The finish line is at Piazza del Campo, where a huge crowd welcomes the arrival of all participants. Tonight, we will dine together and relive the day over a hearty dinner in our guides' favorite restaurant. Cheers to an unforgettable Strade Bianche bike tour!

HOTEL:

Hotel Athena

INCLUDED MEALS:

Breakfast | Lunch | Dinner

Day

TODAY'S ACTIVITY:

Departure

DESCRIPTION:

It's sadly time to bid farewell to Tuscany. Rise bright and early this morning to make the most of the stunning light and watch a bright new day rise over the Tuscan countryside. Or choose to linger a while over a hot cappuccino and enjoy a leisurely morning at the hotel. After breakfast, the group will shuttle back to Hotel Albani in Florence.

INCLUDED MEALS:

Breakfast

5

[VIEW TRAVEL AND LOGISTICS DETAILS »](#)

WHAT'S INCLUDED

For us, the details matter most

Every moment of a Trek Travel pro race bike trip has more than you could have ever dreamed of. More romance. More scenery. More choice. It's the little additions to every Trek Travel cycling vacation that make it truly special. And that's how we help you create more memories.

What's Included

- Four nights of accommodation at handpicked hotels
- Two experienced guides to provide local knowledge, support, and camaraderie
- Daily route support with both guides and our support van
- Daily breakfast, four lunches, and three dinners

- Two social hours of drinks and hors d'oeuvres
- Ride a Trek Domane SL 7 disc
- Up to three daily route options on riding days
- Snacks and drinks for each day's ride
- Trek Travel Bontrager cycling jersey and socks to keep
- Trek-Segafredo pro team kit to keep
- Trek Travel water bottles to keep
- Cinch sack day bag to keep
- Each bike is equipped with a Garmin Edge 1030 GPS computer, flat pack, front and rear Bontrager Flare R lights, a Bontrager saddle, and pedals (Shimano clipless road pedals, Shimano clipless mountain pedals, caged, or flat pedals)
- Bontrager WaveCel helmets
- All gratuities for drivers, local experts, and hospitality staff
- All luggage transfers and transportation during your trip
- A personalized digital photobook of your trip
- Entrance fees for all activities, private tours, and events

Gear

- Trek Domane SL 7 disc carbon road bike with Shimano Di2 electronic shifting, disc brakes, and a custom Strade Bianche bike setup
- Trek Travel Bontrager cycling jersey and socks to keep
- Trek-Segafredo pro team kit to keep
- Trek Travel water bottles to keep
- Shimano clipless road pedals, Shimano clipless mountain pedals, caged, or flat pedals
- Bontrager WaveCel helmet
- Bontrager men's and women's specific saddles
- Bontrager front and rear Flare R lights and a flat pack
- Garmin Edge 1030 GPS computer
- Cinch sack day bag to keep
- Coupon valued up to \$500 off a new Trek Bicycle. Your coupon will be delivered via email prior to your trip.
- *For the most comfortable ride, you may choose to bring your own pedals, saddle, and helmet on the trip. Your guides will install your gear on the first day during your bike fit.*

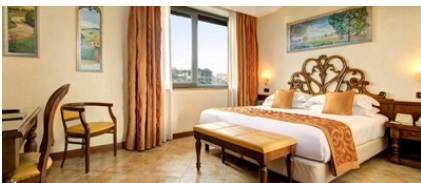
THANK YOUR GUIDES, BY TIPPING

Gratuities for your Trek Travel guides are not included in your trip price. We recommend tipping 7.5-10% of your trip price for the guide team. Local currency is preferred and unless you want to tip separately, guides will divide tips amongst themselves. Please tip your guides at your discretion, based on their level of professionalism, guest care, and service.

What's Not Included

- Airfare and transportation to and from the trip pick-up/drop-off locations
- Lodging before and after the trip
- Personal items purchased during the trip
- Optional activities not scheduled by Trek Travel
- On select trips some meals are not included. On these trips, Trek Travel invites you to explore the local cuisine at your leisure.

HOTELS



HOTEL ATHENA

SIENA, ITALY

This 4-star hotel is nestled among the heart of Siena's old town, with the cathedral and Piazza del Campo only steps away. It has been designed with luxury and rustic sensibility in mind, as each room comes equipped with a range of modern amenities. Enjoy panoramic views of the Tuscan countryside from a rooftop terrace adjacent to



MEETING & DEPARTING

How To Get There

We suggest that you arrive at least one day prior to the start of your Strade Bianche cycling tour, which will enable you to adjust to the time zone and minimize the risk of missing the trip start due to flight-related delays. We recommend that you fly into Florence's Amerigo Vespucci Airport (FLR). The Florence airport is about three miles from the town center. You can take a taxi (~20 euros) directly to the hotel or a bus, which departs hourly.

Rome and Milan also offer flight options. From Rome's Fiumicino Airport (FCO), you may take a direct train to Rome's central station, Roma Termini. Follow the "Stazione/Railway Station" signs. Trains depart twice hourly. Tickets can be purchased at a Biglietteria office or from ticket machines. All tickets must be validated before getting on the train: do this by stamping your ticket at the yellow boxes near the platform. The ride takes 30 minutes. From Roma Termini, transfer to a train for Florence. The Eurostar trains depart frequently and are the quickest. The trip takes one and a half hours and costs between 44-62 euros one way per person. In Florence, taxis are available to take you to your hotel. Taxi service is available from Rome Fiumicino Airport to central Rome for around 50 euros.

Before & After: Florence, Italy

Florence is the majestic heart of Renaissance art and intellect. Several days can be spent wandering the streets in the shadow of Brunelleschi's Duomo and strolling beside the Arno. Along with the Duomo and Ponte Vecchio, the Uffizi gallery, a pillar of the Renaissance and Medici eras, merits a visit. Michelangelo's David in the Galleria dell'Arte is not to be missed. Keep in

Meeting Time And Location

Your Trek Travel guides will meet you at the Hotel Albani (via Fiume, 12, 50123, Florence, Italy) at 11:00 AM on the first day of the trip. A one-hour shuttle will bring you to the Hotel Athena in the beautiful town of Siena, your home for the next four nights. After a light lunch, your guides will discuss the rules of bike safety and specific cycling tips before familiarizing you with your Trek Domane and ensuring a comfortable fit. Then it's time to take to the open road and warm up your legs as you spin through rolling woodlands and enjoy your first expansive Tuscan vistas.

If you will be late for the pick-up or are going to miss it altogether, please inform your guides. You will receive an email a week before the trip starts with their names and contact details. If you cannot reach them, please call the hotel and leave a message with your expected arrival time and contact details.

Departing Time And Location

You will say farewell to your guides at 10:00 AM at the Hotel Athena. You'll depart by private shuttle for Hotel Albani, Florence, arriving close to 11:30 AM. The hotel is a five-minute walk from Santa Maria Novella train station where trains connect to many European cities. Please do not book seats before 1:00 PM to ensure enough time for arrival. The airport in Florence (FLR) is three miles from the city. You can reach it by train, taxi, or shuttle bus; please do not schedule a flight prior to 3:00 PM. Visit www.Trenitalia.com for train information.

HOTEL PALAZZO VECCHIO

This charming 3-star hotel boasts an ideal location in the heart of the historic center of the city, just steps away from the Santa Maria Novella train station. Built in the early 20th century and recently renovated to provide modern amenities, the Palazzo Vecchio is the perfect choice for those seeking a comfortable and convenient option.

www.HotelPalazzoVecchio.it | ~\$130

HOTEL IL GUELFO BIANCO

This patrician home of the 16th century is close to the old market in the heart of downtown Florence, just a short walk to the cathedral and principal museums. This 3-star hotel recently re-opened its doors to guests after having undergone a complete restoration. The Renaissance architecture and the refined furnishings reflect the Florentine character.

mind while exploring Florence that opening hours vary and are quite often inconsistent. Different museums are open on different days and lines can be very long. It's worthwhile to pay a few extra euros and pre-book your tickets—this will enable you to bypass long lines of visitors at the entrances. We recommend the following accommodations for your pre- and post-trip hotel.

www.IIGuelfoBianco.it | ~\$190

HOTEL ALBANI

Hotel Albani is a stately and impeccably restored early 20th-century townhouse. A serene atmosphere completes the setting—perfect for those wishing to find an exclusive hideaway within walking distance of the Santa Maria Novella train station.

hotelalbanifirenze.com/ | ~\$200

* Hotels listed above are local properties we love. We do not have special rates available.



FAQS

What Are The Daily Rides Like?

- Rider Type | 3/4 - Active/Avid
- Average Daily Mileage | 40
- Terrain | Hilly
- Average Daily Elevation | 3,400 feet
- Total Miles | 150
- Total Elevation | 13,500 feet

Averages and totals are calculated from our "Avid Ride" options.

The terrain is consistently rolling, with quiet, narrow, and winding roads. The Strade Bianche course is on gravel roads with steep climbs. Our Strade Bianche bike tour is best suited for Type 3/4 Riders. Our Trek Travel guides can also easily accommodate Type 3 Riders, who seek less mileage or fewer uphill, with a boost in the van.

What are the options for a non-rider travel companion?

On most Trek Travel trips, we offer non-riding options for riders who want to take the afternoon off or travel companions who want to spend little or no time in the saddle. Some of these options may need to be scheduled before your trip—please contact one of our Trip Consultants for more information. Expenses and/or related transportation to these activities may not be included in the trip price. Some non-riding options on our Strade Bianche bike tour are:

- Enjoy the atmosphere of the race
- Discover why Tuscan wines and olive oils are so renowned during our private wine tasting
- Discover the center of Siena, a UNESCO World Heritage Site
- Enjoy gourmet Tuscan cuisine

Trip Changes

See itinerary for specific daily ride distances and elevation options. On all of our vacations, Trek Travel seeks to find quiet, paved secondary roads or bike paths to experience a region; busy roads are avoided as much as possible. Our itineraries are an approximation of our trips. Trek Travel strives to offer every guest a vacation of a lifetime on every trip. At times routes, hotels, activities, etc. listed here may change at the discretion of the trip designer or guides to improve the trip experience.